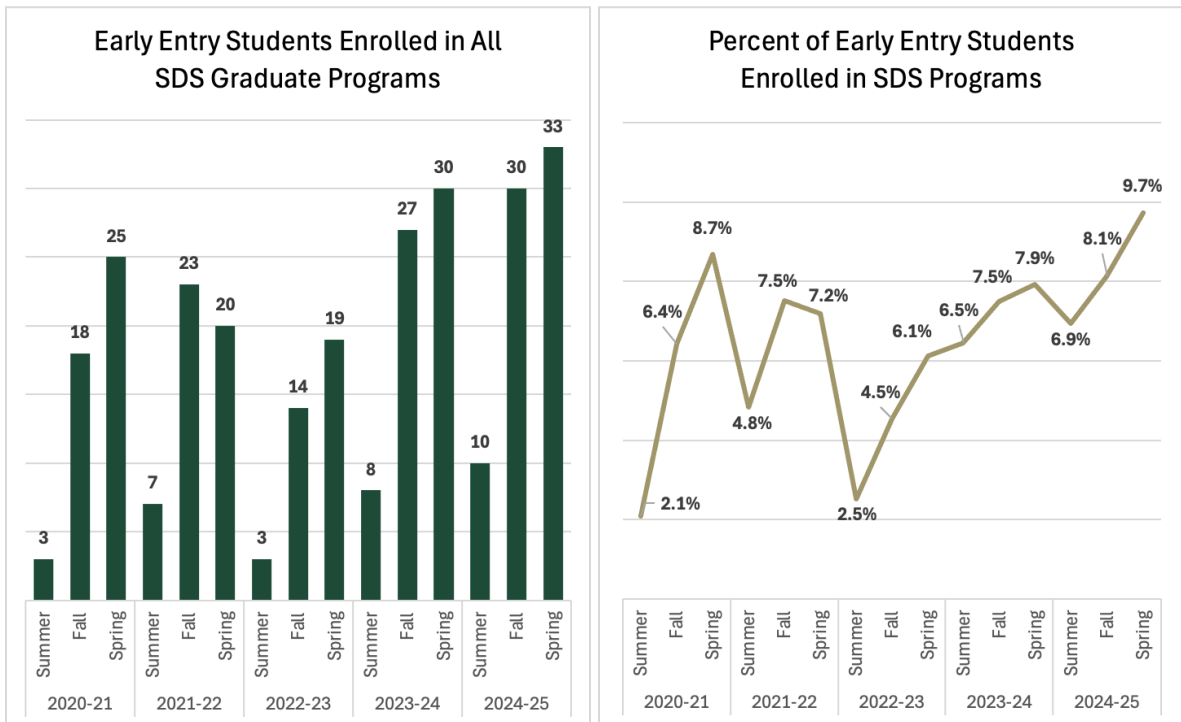


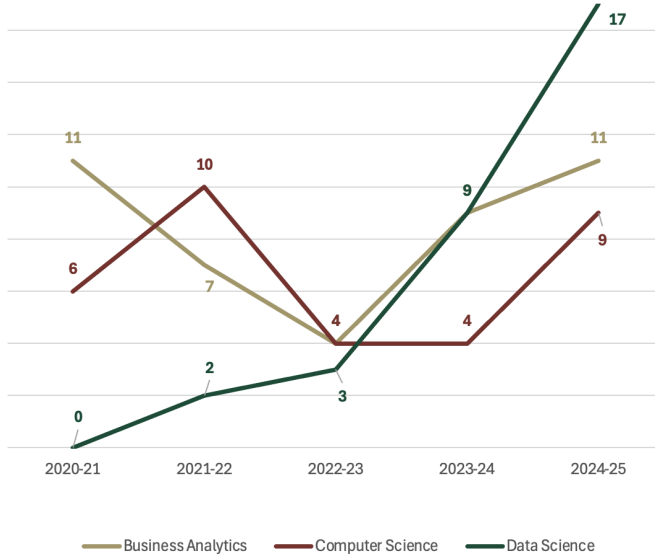
Early Entry Enrollment Trends

133 Total Students in Early Entry from 2020-2025 (122 DSBA; 11 HIAN)

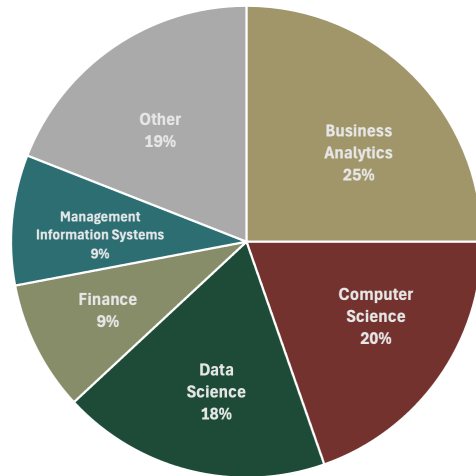


DSBA Early Entry Enrollment				HIAN Early Entry Enrollment			
	Summer	Fall	Spring		Summer	Fall	Spring
2020-21	3	16	24	2020-21	0	2	1
2021-22	7	22	19	2021-22	0	1	1
2022-23	3	13	18	2022-23	0	1	1
2023-24	7	24	27	2023-24	1	3	3
2024-25	8	25	31	2024-25	2	5	2

Number of Early Entry Students from the Most Common Programs



Most Common Undergrad Programs in Early Entry



Breakdown of Undergraduate Programs Represented in Early Entry

Data Science & Business Analytics

Business Analytics (42 Students)
 Computer Science (33)
 Data Science (31)
 Finance (15)
 Management Information Systems (16)
 Health Systems Management (6)
 Operations & Supply Chain Management (5)
 Marketing (4)
 Mathematics (4)
 Public Health (2)
 Biology (2)
 Mathematics for Business (2)
 Computer Engineering (1)
 Economics (1)
 Graphic Design (1)
 German (1)
 Management (1)
 Nursing (1)
 Mechanical Engineering (1)

Health Informatics & Analytics

Health Systems Management (6 Students)
 Computer Science (2)
 Public Health (1)
 Nursing (1)
 Data Science (1)